

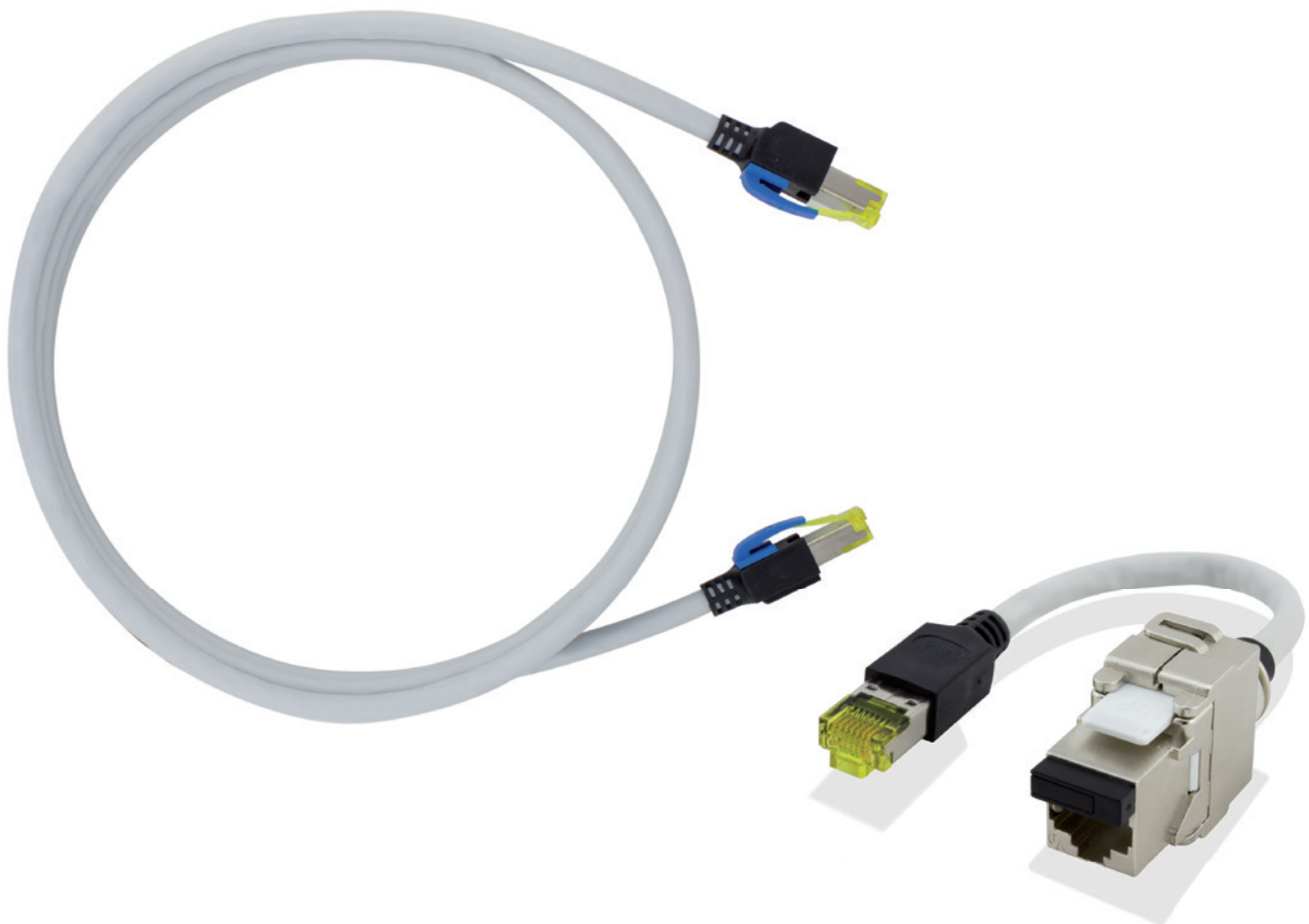
RJ45-Passive RFID Sensor Cord Sensor Cord FUTURE-PATCH®



RFID



Intelligent



FUTURE-PATCH® at a glance



- wireless identification of patch cords through RFID technology
- planning and documentation of patch cord status in real time
- maximisation of the operational safety and minimisation of down times
- integrable into existing DCIM solutions
- AIM ready - retrofitable onto existing copper and fibre patch panels
- improvement of IT staff efficiency



Management
System
ISO 9001:2015

www.tuv.com
ID 9108614403

Technical specification

General

| | |
|--------------------|---|
| Length of cable | standardised: 1 m, 2 m, 3 m, 4 m, 5 m, 7 m, 10 m |
| Colour of cable | grey |
| Colour of moulding | black - Cat.6 _A |
| Type of cable | Cat.6 _A patch cord (black) with additional function for transmitting the RFID signal from one end to the other (UC 900 SS 27 5P) |
| Standards | EN 50173-1; EN 50288-4-2; ISO/IEC 11801; IEC 61156-5; IEC 60332-1; IEC 60754-2; IEC 61034 PoE+ acc. to IEEE 802.3at LSHF (FRNC) acc. to IEC 60332-1 (flame-retardant), IEC 60754-2 (non-halogen), IEC 61034 (low-smoke) |



Characteristics of the connector

| | |
|------------------------------|--|
| Type and colour of connector | Hirose TM31 for Cat.6 _A (black moulded) |
|------------------------------|--|

RFID function

| | |
|----------|---|
| Features | Range extender for port scanners (e.g. ports on server machines). Transmission of the RFID signal from the patch panel via sensor cord to the server port (max. 10 m) and reading out the servers' port ID. Optional feature: server related data e.g. location, date of first operation, unit etc. |
|----------|---|

Certificates

| | |
|----|---|
| CE | conformity  DOWNLOAD  |
|----|---|

Environmental

| | |
|-----------------------|----------------------------|
| Operating environment | 0- +40 °C (+32 - + 104 °F) |
|-----------------------|----------------------------|



www.future-patch.de

**TKM Telekommunikation
und Elektronik GmbH**
Schlossstraße 123
41238 Mönchengladbach
Germany

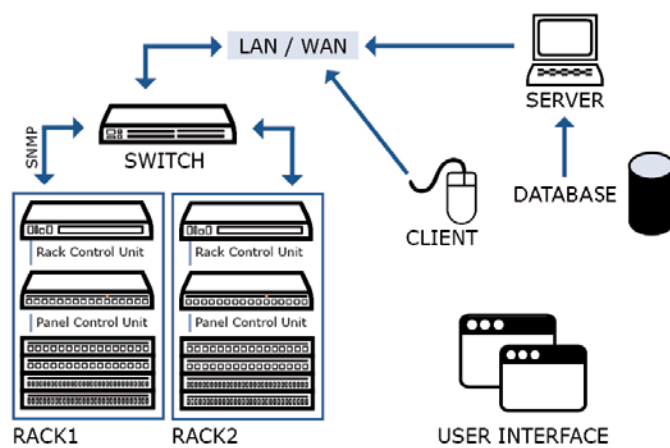
Phone: +49 2166 9911-0
Fax: +49 2166 9911-99
Email: info@tkm-gmbh.de
Internet: www.tkm-gmbh.de

TKM
TELEKOMMUNIKATION
UND ELEKTRONIK GMBH

Description

Abstract / Customer Value

- sensor cord realised as a bundle consists of special patch cord and RFID mounting adapter for server port
- RJ45 sensor cords manufactured by TKM are designed for structured networks according to ISO/IEC 11801 or DIN EN 50173-1
- special RFID sensor placed at the patch cords' connector for range extender functionality
- the RFID scan signal is being transmitted passively from the port scanner over max. 10 m length
- reading out the physical status of far end ports of server machines with the function of the port scanner
- real-time monitoring and real-time documentation of the physical port status of the server ports
- optional feature: server related data e.g. location, date of first operation, unit etc. stored in the memory of the RFID transponder



Ordering information

Part number

5228899XXXXFP

Product description

FUTURE-PATCH® sensor cord Cat.6_A

Bundle: RJ45 sensor cord consists of special patch cord Cat.6_A with range extender functionality (max. 10 m) and RFID mounting adapter (connector/jack) for server port

Colour cable: grey

Colour moulding: black

Length: XXX (e.g. 010 for 1.0 m)



www.future-patch.de

TKM Telekommunikation und Elektronik GmbH
Schlossstraße 123
41238 Mönchengladbach
Germany

Phone: +49 2166 9911-0
Fax: +49 2166 9911-99
Email: info@tkm-gmbh.de
Internet: www.tkm-gmbh.de



Information for the mounting process on the server port side

- In order to tag (bring the RFID transponder to the port) the server port with the RFID transponder a minimised connector/jack component is used. Based on the application it is implemented either with a 0dB attenuator or RJ45 connector/keystone module.

Additional FUTURE-PATCH® options:

- Factory stored additional data like length of the cable, type of the fibre, type of the category, colour of the connector etc. can be enquired separately.



www.future-patch.de

**TKM Telekommunikation
und Elektronik GmbH**
Schlossstraße 123
41238 Mönchengladbach
Germany

Phone: +49 2166 9911-0
Fax: +49 2166 9911-99
Email: info@tkm-gmbh.de
Internet: www.tkm-gmbh.de

