

### PCU - RJ45 Patch Panels 1 U

#### Panel Control Unit - PCU



Intelligent



RFID



Scalable



### FUTURE-PATCH® at a glance



- wireless identification of patch cords through RFID technology
- planning and documentation of patch cord status in real time
- maximisation of the operational safety and minimisation of down times
- integrable into existing DCIM solutions
- AIM ready - retrofitable onto existing copper and fibre patch panels
- improvement of IT staff efficiency



Management  
System  
ISO 9001:2015

www.tuv.com  
ID 9108614403

## Technical specification

### General

|             |  |
|-------------|--|
| Consists of | 19 inch patch panel, RFID port scanner V2.0 (19 inch RFID antenna strip, RFID electronic module) |
| Interfaces  | front: 24 LEDs, 24 RJ45 keystone modules<br>rear: bus  |


### Physical

|                             |  |
|-----------------------------|--|
| Dimensions (HxWxD)          | 44.45 x 485 x 115 mm (1.75 x 19 x 4.6 inch)    |
| Rack unit                   | 1 U  |
| Net weight                  | 0.85 kg (1.8 lbs) without modules (+30 g each) |
| Shipping dimensions (HxWxD) | 80 x 565 x 215 mm (3.1 x 22 x 8.4 inch)        |
| Shipping weight             | 1.0 kg (2.2 lbs) without modules (+30 g each)  |
| Colour                      | black, similar to RAL 9005                     |
| Material                    | 1.5 mm (0.06 inch) sheet steel, powder coated  |

### ▶ RFID technology

|              |   |
|--------------|---|
| Port scanner | real-time monitoring of the port status; status: empty or connected incl. cable-ID information and cable related data   |
| Features     | scanner technology incl. environmental sensors<br>optional: processing the cable related data stored in the RFID transponder - e.g. length, type of category etc. |

### Certificates

|    |   |
|----|---|
| CE | conformity  <a href="#">DOWNLOAD</a>  |
|----|---|

### Power supply of the RFID port scanner

|                   |                       |
|-------------------|-----------------------|
| Input             | by bus cable from RCU |
| Power consumption | 1.5 W                 |

### Environmental

|                             |                                   |
|-----------------------------|-----------------------------------|
| Operating environment       | 0 - +40 °C (+32 - +104 °F)        |
| Operating relative humidity | 0 - 95%, non-condensing           |
| Operating elevation         | 0 - 3000 meters (0 - 10000 feet)  |
| Storage temperature         | -20 - +85 °C (-4 - +185 °F)       |
| Storage relative humidity   | 0 - 95%, non-condensing           |
| Storage elevation           | 0 - 15000 meters (0 - 50000 feet) |
| Online thermal dissipation  | 5 BTU/h                           |

▶ Depending on the DCIM software in operation



[www.future-patch.de](http://www.future-patch.de)

**TKM Telekommunikation  
und Elektronik GmbH**  
Schlossstraße 123  
41238 Mönchengladbach  
Germany

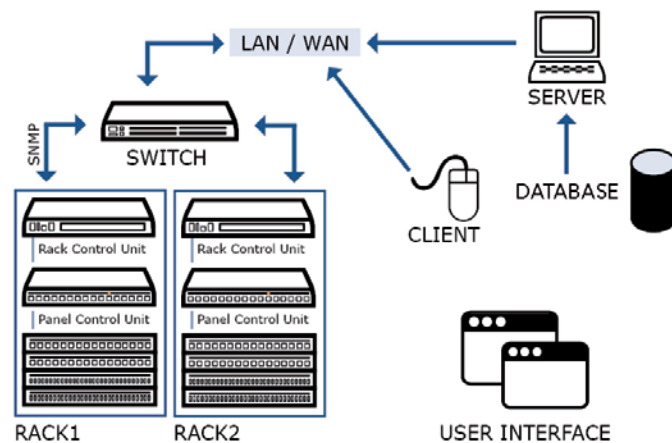
Phone: +49 2166 9911-0  
Fax: +49 2166 9911-99  
Email: [info@tkm-gmbh.de](mailto:info@tkm-gmbh.de)  
Internet: [www.tkm-gmbh.de](http://www.tkm-gmbh.de)



## Description

### Abstract / Customer Value

- the RFID port scanners (PCU) can be retrofitted in existing data networks onto patch panels manufactured by TKM or TKM compatible patch panels
- the RFID port scanner can be retrofitted tool-free during normal network operation onto patch panels without removing existing patch cords (plug&play) - AIM ready product range
- factory made intelligent patch panels can be integrated into existing **FUTURE-PATCH®** data networks (hot-swappable and plug&play)
- added RFID port scanner will be detected automatically
- RFID port scanner monitors the port status in real-time
- in case of a change (move, add or relocate) of the port status a notification will be send automatically to the management software
- the RFID port scanner visually supports the IT staff through LEDs during the patching sequence and monitor the correctness of the realisation
- the **FUTURE-PATCH®** system supports IT processes according to ITIL and ISO 20000
- the **FUTURE-PATCH®** system contributes to the highest data security and supports requirements according to ISO 27001
- ▶ optional: processing the cable related data stored in the RFID transponder - e.g. length, type of connector and fibre etc.
- optional feature: RFID port blocker - dust cap for the keystone module with RFID transponder



- ▶ Depending on the DCIM software in operation



[www.future-patch.de](http://www.future-patch.de)

**TKM Telekommunikation  
und Elektronik GmbH**  
Schlossstraße 123  
41238 Mönchengladbach  
Germany

Phone: +49 2166 9911-0  
Fax: +49 2166 9911-99  
Email: [info@tkm-gmbh.de](mailto:info@tkm-gmbh.de)  
Internet: [www.tkm-gmbh.de](http://www.tkm-gmbh.de)



## Ordering information

| Part number              | Product description  |
|--------------------------|--|
| 4677632FP-9005           | <b>FUTURE-PATCH® patch panel - 1 U</b><br>RJ45 panel incl. 24x Cat.6 <sub>A</sub> keystone modules and integrated RFID port scanner V2.0 (PCU)<br>Colour of panel: RAL 9005<br>Colour of printings: RAL 9003<br>Incl.: 1x bus connector  |
| 4677631-9005             | <b>AIM ready patch panel - 1 U</b><br>RJ45 panel incl. 24x Cat.6 <sub>A</sub> keystone modules - ready for upgrade with RFID port scanner V2.0 (PCU)<br>Colour of panel: RAL 9005<br>Colour of printings: RAL 9003   |
| A-11A-2400NN-N-<br>NN-TK | <b>AIM ready patch panel (empty) - 1 U</b><br>RJ45 panel whitout 24x Cat.6 <sub>A</sub> keystone modules - ready for upgrade with RFID port scanner V2.0 (PCU)<br>Colour of panel: RAL 9005<br>Colour of printings: RAL 9003   |
| 54677630                 | <b>PCU - Panel Control Unit</b><br>RFID port scanner for 24 port RJ45 panel with 17.2 mm spacing - RFID electronic module and 19 inch<br>RFID antenna strip with 24 LEDs<br>Type: <b>FUTURE-PATCH®</b> PCU - V2.0<br>Color of housing: black, similar to RAL 9005<br>Compatible to: TKM AIM ready RJ45 Patch Panel |

## Scope of delivery (e.g. 4677632FP-9005)

- 1x RJ45 patch panel - 1 U
- 24x Cat.6<sub>A</sub> keystone modules for 10 GB ethernet application (4677682A)
- 1x RFID port scanner (PCU) (54720100FP)
- 1x bus connector type: black



[www.future-patch.de](http://www.future-patch.de)

**TKM Telekommunikation  
und Elektronik GmbH**  
Schlossstraße 123  
41238 Mönchengladbach  
Germany

Phone: +49 2166 9911-0  
Fax: +49 2166 9911-99  
Email: [info@tkm-gmbh.de](mailto:info@tkm-gmbh.de)  
Internet: [www.tkm-gmbh.de](http://www.tkm-gmbh.de)

