

### PCU - HD 48x RJ45 Patch Panels 1,5 U Panel Control Unit - PCU



Intelligent



RFID



Scalable



### FUTURE-PATCH® at a glance



- wireless identification of patch cords through RFID technology
- planning and documentation of patch cord status in real time
- maximisation of the operational safety and minimisation of down times
- integrable into existing DCIM solutions
- AIM ready - retrofitable onto existing copper and fibre patch panels
- improvement of IT staff efficiency



Management System  
ISO 9001:2015

www.tuv.com  
ID 9108614403

## Technical specification

### General

Consists of	19 inch patch panel, 2x RFID port scanner V2.0, (2x 19 inch RFID antenna strip, 2x RFID electronic module)
Interfaces	front: 2x 24 LEDs, 48 RJ45 keystone modules rear: 2x bus



### Physical

Dimensions (HxWxD)	66.4 x 483 x 114 mm (2.61 x 19 x 4.5 inch)
Rack unit	1.5 U
Net weight	1 kg with strain relief angle and without modules
Shipping dimensions (HxWxD)	87 x 492 x 330 mm (3.4 x 19.4 x 13 inch)
Shipping weight	1.2 kg (2.6 lbs) without modules (each 30 g)
Colour	black, similar to RAL 9005
Material	1.5 mm (0.06 inch) sheet steel, powder coated

### ▶ RFID technology

Port scanner	real-time monitoring of the port status; status: empty or connected incl. cable-ID information and cable related data
Features	scanner technology incl. environmental sensors optional: processing the cable related data stored in the RFID transponder - e.g. length, type of category etc.

### Certificates

CE	conformity  <a href="#">DOWNLOAD</a> 
----	--

### Power supply of the RFID port scanner

Input	by bus cable from RCU
Power consumption	2x 1.5 W

### Environmental

Operating environment	0 - +40 °C (+32 - +104 °F)
Operating relative humidity	0 - 95%, non-condensing
Operating elevation	0 - 3000 meters (0 - 10000 feet)
Storage temperature	-20 - +85 °C (-4 - +185 °F)
Storage relative humidity	0 - 95%, non-condensing
Storage elevation	0 - 15000 meters (0 - 50000 feet)
Online thermal dissipation	5 BTU/h

▶ Depending on the DCIM software in operation



[www.future-patch.de](http://www.future-patch.de)

**TKM Telekommunikation  
und Elektronik GmbH**  
Schlossstraße 123  
41238 Mönchengladbach  
Germany

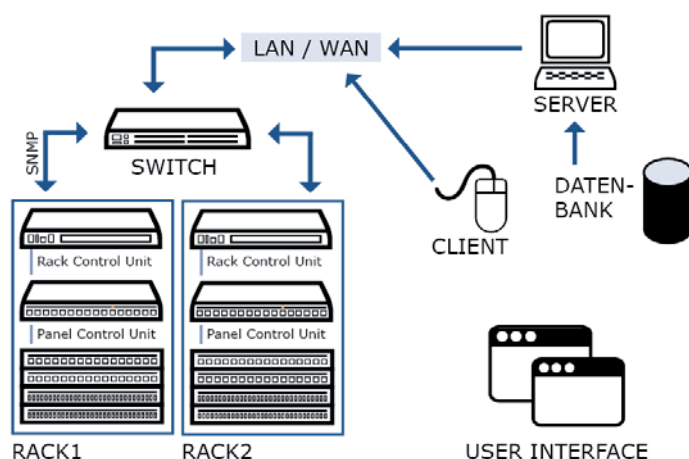
Phone: +49 2166 9911-0  
Fax: +49 2166 9911-99  
Email: [info@tkm-gmbh.de](mailto:info@tkm-gmbh.de)  
Internet: [www.tkm-gmbh.de](http://www.tkm-gmbh.de)

**TKM**  
TELEKOMMUNIKATION  
UND ELEKTRONIK GMBH

## Description

### Abstract / Customer Value

- the RFID port scanners (PCU) can be retrofitted in existing data networks onto patch panels manufactured by TKM or TKM compatible patch panels
- the RFID port scanner can be retrofitted tool-free during normal network operation onto patch panels without removing existing patch cords (plug&play) - AIM ready product range
- factory made intelligent patch panels can be integrated into existing **FUTURE-PATCH®** data networks (hot-swappable and plug&play)
- added RFID port scanner will be detected automatically
- RFID port scanner monitors the port status in real-time
- in case of a change (move, add or relocate) of the port status a notification will be send automatically to the management software
- the RFID port scanner visually supports the IT staff through LEDs during the patching sequence and monitor the correctness of the realisation
- the **FUTURE-PATCH®** system supports IT processes according to ITIL and ISO 20000
- the **FUTURE-PATCH®** system contributes to the highest data security and supports requirements according to ISO 27001
- ▶ optional: processing the cable related data stored in the RFID transponder - e.g. length, type of connector and fibre etc.
- optional feature: RFID port blocker - dust cap for the keystone module with RFID transponder



- ▶ Depending on the DCIM software in operation



[www.future-patch.de](http://www.future-patch.de)

**TKM Telekommunikation  
und Elektronik GmbH**  
Schlossstraße 123  
41238 Mönchengladbach  
Germany

Phone: +49 2166 9911-0  
Fax: +49 2166 9911-99  
Email: [info@tkm-gmbh.de](mailto:info@tkm-gmbh.de)  
Internet: [www.tkm-gmbh.de](http://www.tkm-gmbh.de)



## Ordering information

Part number	Product description
F-21A-4802NN-N-NN-TK	<b>FUTURE-PATCH® patch panel - 1.5 U</b> RJ45 panel incl. 48x Cat.6 <sub>A</sub> keystone modules and 2 integrated RFID port scanners V2.0 (PCU) Colour of panel: RAL 9005 Colour of printings: RAL 9003 Incl.: 2x bus connector
A-21A-4802NN-N-NN-TK	<b>AIM ready patch panel - 1.5 U</b> RJ45 panel incl. 48x Cat.6 <sub>A</sub> keystone modules - ready for upgrade with RFID port scanner V2.0 (PCU) Colour of panel: RAL 9005 Colour of printings: RAL 9003
A-21A-4800NN-N-NN-TK	<b>AIM ready patch panel - 1.5 U</b> RJ45 panel whitout 48x Cat.6 <sub>A</sub> keystone modules - ready for upgrade with RFID port scanner V2.0 (PCU) Colour of panel: RAL 9005 Colour of printings: RAL 9003
54677630	<b>PCU - Panel Control Unit</b> 1x RFID port scanner for 24 port RJ45 panel with 17.2 mm spacing - RFID electronic module and 19 inch RFID antenna strip with 24 LEDs Typ: <b>FUTURE-PATCH®</b> PCU - V2.0 Color of housing: black, similar to RAL 9005 Compatible to: TKM AIM ready RJ45 Patch Panel

## Scope of delivery (e.g. F-21A-4802NN-N-NN-TK)

- 1X RJ45 patch Panel - 1.5 U
- 48X Cat.6<sub>A</sub> keystone modules for 10 GB ethernet application (4677682A)
- 2X RFID port scanner (PCU) (54720100FP)
- 2X bus connector type: black



[www.future-patch.de](http://www.future-patch.de)

**TKM Telekommunikation  
und Elektronik GmbH**  
Schlossstraße 123  
41238 Mönchengladbach  
Germany

Phone: +49 2166 9911-0  
Fax: +49 2166 9911-99  
Email: [info@tkm-gmbh.de](mailto:info@tkm-gmbh.de)  
Internet: [www.tkm-gmbh.de](http://www.tkm-gmbh.de)

