

PCU - FO Patch Panels LC/SC/E2000

Panel Control Unit - PCU



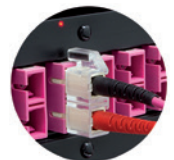
Intelligent



RFID



Scalable



FUTURE-PATCH® at a glance



- wireless identification of patch cords through RFID technology
- planning and documentation of patch cord status in real time
- maximisation of the operational safety and minimisation of down times
- integrable into existing DCIM solutions
- AIM ready - retrofitable onto existing copper and fibre patch panels
- improvement of IT staff efficiency



Management System
ISO 9001:2015

www.tuv.com
ID 9108614403

Technical specification

General

Consists of	19 inch patch panel, RFID port scanner V2.0 (19 inch RFID antenna strip, RFID electronic module)
Interfaces	front: 24 LEDs, 24 FO adapters rear: bus


Physical

Dimensions (HxWxD)	44.45 x 485 x 240 mm (1.75 x 19 x 11.9 inch)
Rack unit	1U
Net weight	1.6 kg (3.5 lbs) without splice equipment (+250 g for splice equipment)
Shipping dimensions (HxWxD)	115 x 540 x 420 mm (4.5 x 21 x 16.5 inch)
Shipping weight	2 kg (4.4 lbs) without splice equipment (+250 g for splice equipment)
Colour	black, similar to RAL 9005
Material	1.5 mm (0.06 inch) aluminium, powder coated

RFID technology

Port scanner	real-time monitoring of the port status; status: empty or connected incl. cable-ID information and cable related data
Features	scanner technology incl. environmental sensors optional: processing the cable related data stored in the RFID transponder - e.g. length, type of fibre etc.

Certificates

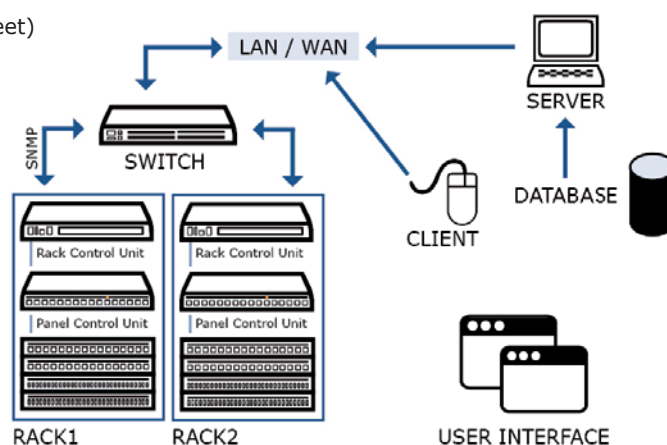
CE	conformity  DOWNLOAD 
----	---

Power supply of the RFID port scanner

Input	by bus cable from RCU
Power consumption	1.5 W

Environmental

Operating environment	0 - +40 °C (+32 - +104 °F)
Operating relative humidity	0 - 95%, non-condensing
Operating elevation	0 - 3000 meters (0 - 10000 feet)
Storage temperature	-20 - +85 °C (-4 - +185 °F)
Storage relative humidity	0 - 95%, non-condensing
Storage elevation	0 - 15000 meters (0 - 50000 feet)
Online thermal dissipation	5 BTU/h



► Depending on the DCIM software in operation



www.future-patch.de

TKM Telekommunikation und Elektronik GmbH
Schlossstraße 123
41238 Mönchengladbach
Germany

Phone: +49 2166 9911-0
Fax: +49 2166 9911-99
Email: info@tkm-gmbh.de
Internet: www.tkm-gmbh.de



Description

Abstract / Customer Value

- the RFID port scanners (PCU) can be retrofitted in existing data networks onto patch panels manufactured by TKM or TKM compatible patch panels
 - the RFID port scanner can be retrofitted tool-free during normal network operation onto patch panels without removing existing patch cords (plug&play) - AIM ready product range
 - factory made intelligent patch panels can be integrated into existing **FUTURE-PATCH®** data networks (hot-swappable and plug&play)
 - added RFID port scanner will be detected automatically
 - RFID port scanner monitors the port status in real-time
 - in case of a change (move, add or relocate) of the port status a notification will be send automatically to the management software
 - the RFID port scanner visually supports the IT staff through LEDs during the patching sequence and monitor the correctness of the realisation
 - the **FUTURE-PATCH®** system supports IT processes according to ITIL and ISO 20000
 - the **FUTURE-PATCH®** system contributes to the highest data security and supports requirements according to ISO 27001
 - optional: processing the cable related data stored in the RFID transponder - e.g. length, type of connector and fibre etc.
 - optional feature: RFID port blocker - dust cap for the keystone module with RFID transponder
- ▶ Depending on the DCIM software in operation

Ordering information

Part no.	FUTURE-PATCH	AIMready	12X	24X	LCdx	SCdx	E2000sx	PC	APC	OS2	OM3	OM4	empty	splice set	MTP/MPO Breakout	2X MPO/MTP adapter	4X MPO/MTP adapter
4729124-V-9005		●		●	●			●		●			●				
4723124-V-9005		●		●	●			●			●		●				
4724124-V-9005		●		●	●			●				●	●				
4729124-VK-9005		●		●	●			●		●				●			
4723124-VK-9005		●		●	●			●			●			●			
4724124-VK-9005		●		●	●			●				●		●			
4729124-VM-9005		●		●	●			●		●					●		●
4723124-VM-9005		●		●	●			●			●				●		●
4724124-VM-9005		●		●	●			●				●			●		●
4729124FP-9005	●			●	●			●		●			●				
4723124FP-9005	●			●	●			●			●		●				
4724124FP-9005	●			●	●			●				●	●				
4729124FP-K-9005	●			●	●			●		●				●			
4723124FP-K-9005	●			●	●			●			●			●			



www.future-patch.de

TKM Telekommunikation und Elektronik GmbH
Schlossstraße 123
41238 Mönchengladbach
Germany

Phone: +49 2166 9911-0
Fax: +49 2166 9911-99
Email: info@tkm-gmbh.de
Internet: www.tkm-gmbh.de



Part no.	FUTURE-PATCH	AIMready	12X	24X	LCdx	SCdx	E2000sx	PC	APC	OS2	OM3	OM4	empty	splice set	MTP/MPO Breakout	2X MPO/MTP adapter	4X MPO/MTP adapter
4724124FP-K-9005	●			●	●			●				●		●			
4729124FP-M-9005	●			●	●			●		●					●		●
4723124FP-M-9005	●			●	●			●			●				●		●
4724124FP-M-9005	●			●	●			●				●			●		●
4729224-V-9005		●		●		●		●		●			●				
4723224-V-9005		●		●		●		●			●		●				
4724224-V-9005		●		●		●		●				●	●				
4729224-VK-9005		●		●		●		●		●				●			
4723224-VK-9005		●		●		●		●			●		●				
4724224-VK-9005		●		●		●		●				●		●			
4729224-VM-9005		●		●		●		●		●					●		●
4723224-VM-9005		●		●		●		●			●				●		●
4724224-VM-9005		●		●		●		●				●			●		●
4729224FP-9005	●			●		●		●		●			●				
4723224FP-9005	●			●		●		●			●		●				
4724224FP-9005	●			●		●		●				●	●				
4729224FP-K-9005	●			●		●		●		●				●			
4723224FP-K-9005	●			●		●		●			●			●			
4724224FP-K-9005	●			●		●		●				●		●			
4729224FP-M-9005	●			●		●		●		●					●		●
4723224FP-M-9005	●			●		●		●			●				●		●
4724224FP-M-9005	●			●		●		●				●			●		●
4729324FP-K-9005	●			●			●		●	●				●			
4724324FP-K-9005	●			●			●	●				●		●			
4720824FP-M-9005	●			●			●		●	●					●	●	
4720924FP-M-9005	●			●			●	●				●			●	●	
4729324-VK-9005		●		●			●		●	●				●			
4724324-VK-9005		●		●			●	●				●		●			
4720824-VM-9005		●		●			●		●	●					●	●	
4720924-VM-9005		●		●			●	●				●			●	●	
A-11A-2403P1-2-0N-TK		●		●	●			●		●				●*			
A-11A-1203P1-2-0N-TK		●	●		●			●		●				●*			
54720100	●				●												
54720200	●					●											

*Heat shrink

Scope of delivery (e.g. 4722124FP-9005)

- 1x FO patch panel with/without splice equipment
- 1x RFID port scanner (PCU) (54720100FP)
- 1x bus connector type: red/black (with locking function)



www.future-patch.de

TKM Telekommunikation und Elektronik GmbH
Schlossstraße 123
41238 Mönchengladbach
Germany

Phone: +49 2166 9911-0
Fax: +49 2166 9911-99
Email: info@tkm-gmbh.de
Internet: www.tkm-gmbh.de

